



PORD

NEW ALAMEIN

IL CAZAR



About IL Cazar

IL Cazar is an international name inspired by the great Ceasar reflecting a bolder leap, promising branded projects with international standards of excellence in every detail. Our aim is to rule and conquer the industry reflected by our selective affordable luxurious projects. Previous and upcoming projects such as Creektown, Creek District and GoHeliopolis are a great attestation of our distinction and mastery.

IL ĆAZAR



A COASTAL OASIS

Overview

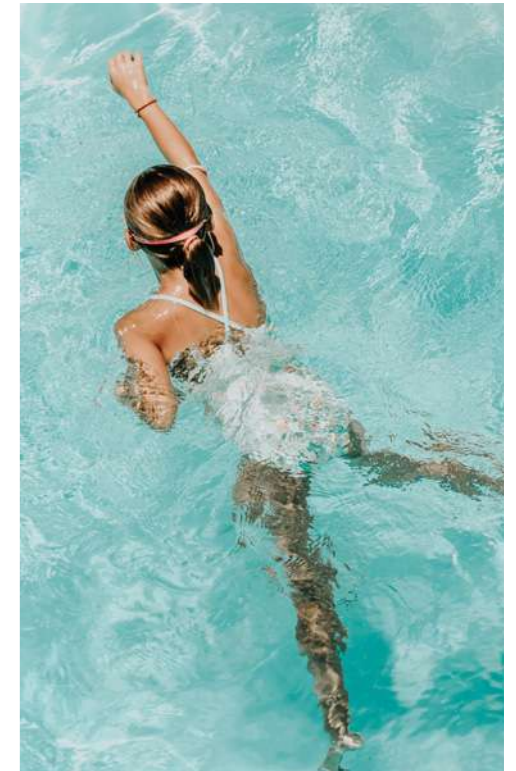
Nord New Alamein is your gate to a carefree life and destressing. It is divided into different residential and commercial zones that cater to all your needs and guarantee a top notch experience at Nord.

The residential part consisting of one storey villas, standalone villas, penthouses and Chalets. As for the facilities; it includes club-house, gym & spa, lagoon, entertainment areas and restaurants.

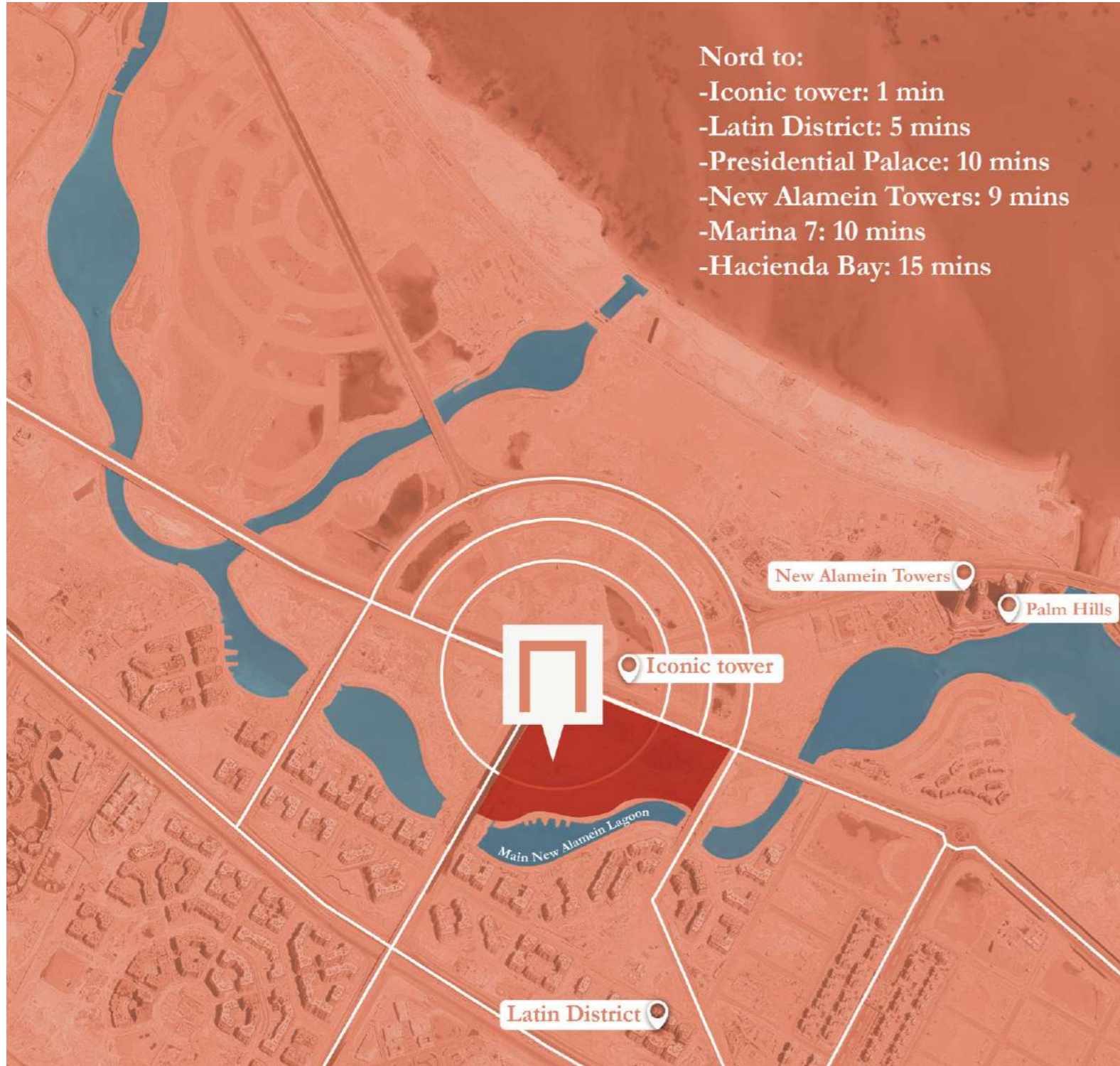


About New Alamein City

The New Alamein City is located in the North Coast and is set to be the first of its kind in the area. It is designed to the high standards of what is called a fourth-generation city. It comes with the new concept of an open-to-the-public tourism city on the North Coast, taking a different approach than the private resorts spread across the sea line.



New Alamein is city built with the purpose of being able to live in it all year long as it offers everything essential such as universities, schools and hospitals. This new city will include a number of global projects; from business & international trade centers to residential towers & luxurious resorts.



Location

Masterplan



Site Masterplan

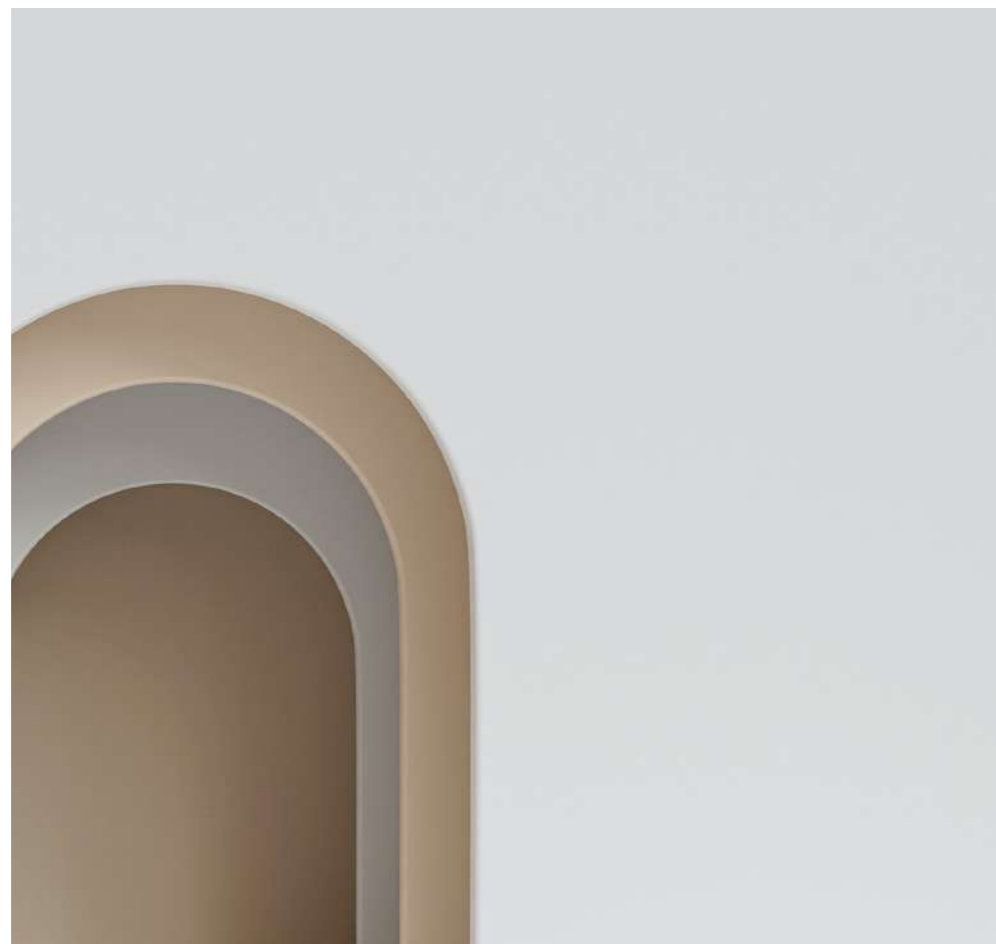


Dimensional Masterplan



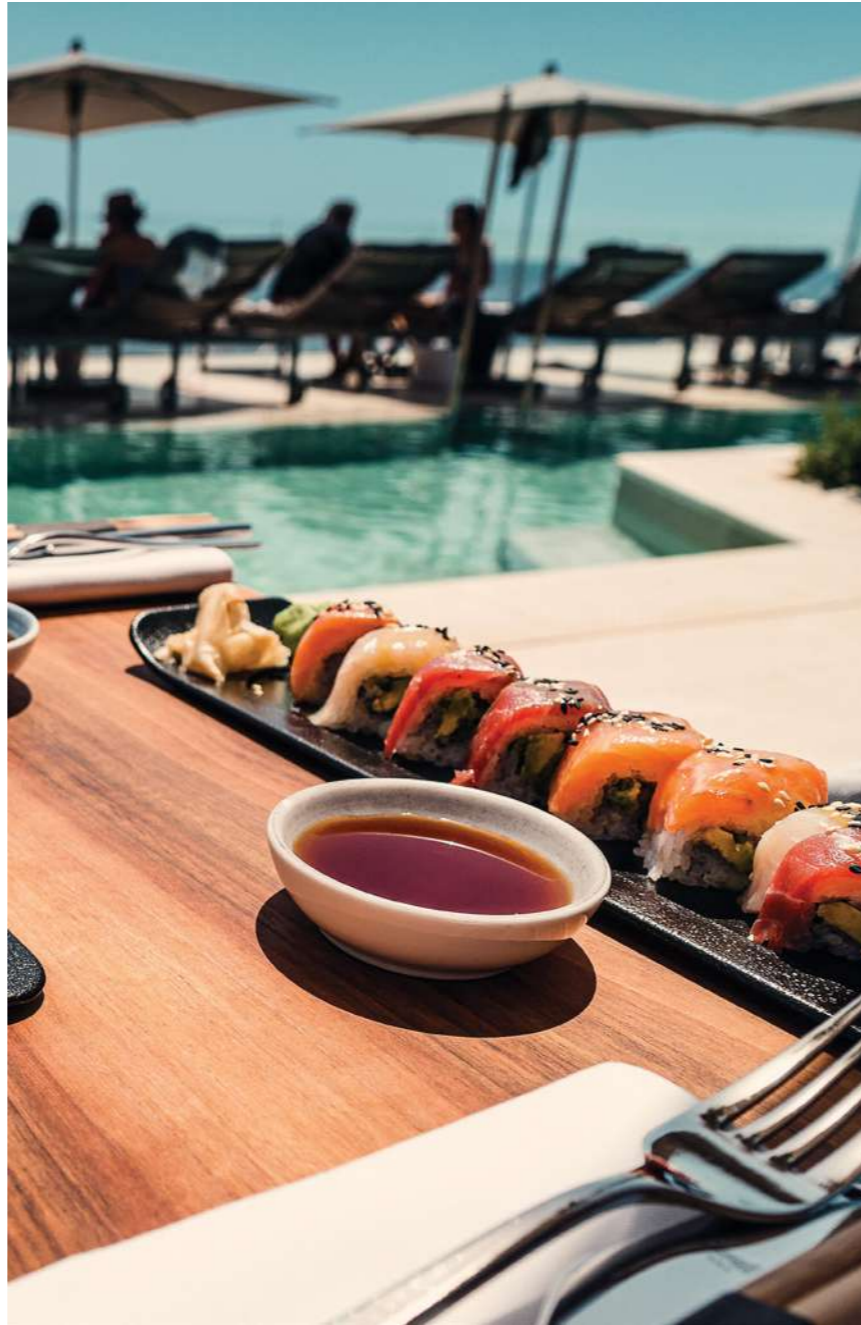
AMENITIES

Club House



Experience the life of luxury and exclusivity in our clubhouse and enjoy all the facilities available such as the great food and beverage venues, the kids' areas and the wellness center.





Restaurants

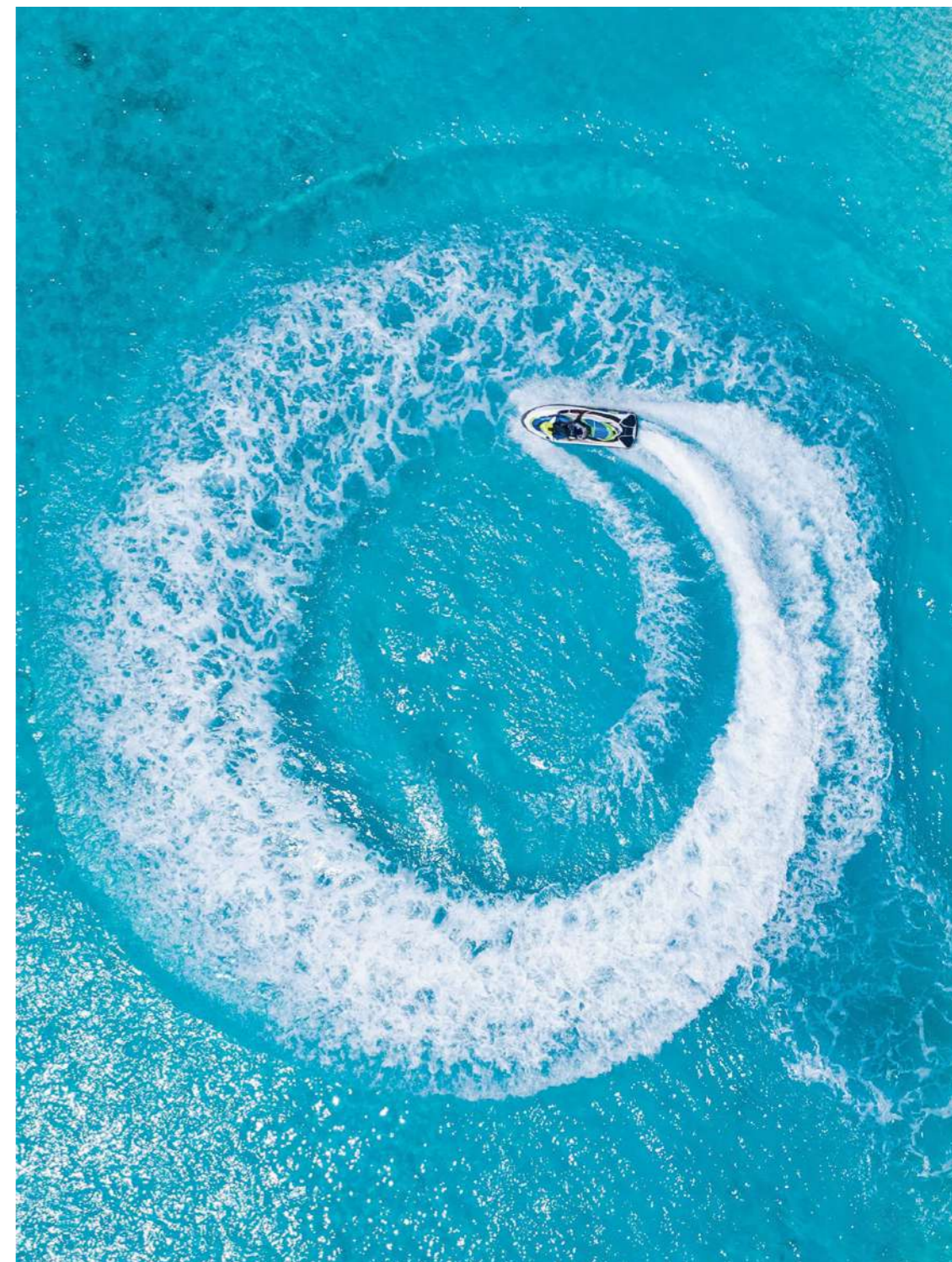
No matter what you're craving, you'll get to enjoy it at your choice of one of many restaurants with different international cuisines to satisfy everyone's taste.





Water Sports

A variety of water sports available on the beaches of Nord for every member of the family to enjoy. There's an activity to match every taste and liking.



Landscape

An ingenious landscape design done to ensure a healthy environment that allows you to destress as well as provide you with aesthetically rich views.





□

UNIT TYPES

©

Shade Villas 370m²





Shade Villas

Ground Floor 270m²

Entrance Lobby	4.58 x 4.52
Reception/Dinning	7.67 x 6.90
Guest Annex	6.18 x 4.01
Dressing	2.91 x 2.06
Bath	3.26 x 2.19
M. Bedroom	5.39 x 4.86
M. Bathroom	2.42 x 2.20
M. Dressing	2.92 x 2.20
Guest Toilet	2.44 x 1.63
Kitchen	4.82 x 4.05
Maid Room	3.86 x 1.84
Nanny Toilet	2.03 x 2.03
Bedroom 01	4.94 x 4.05
Bathroom 01	2.66 x 2.03



Shade Villas

First Floor 100m²

Bedroom 02	4.05 x 3.65
Dressing 02	4.05 x 1.56
Bath 02	2.44 x 2.37
Bedroom 03	4.86 x 4.05
Bath 03	2.41 x 2.20
Terrace 01	2.47 x 8.30
Terrace 02	12.58 x 8.70

Diagrams are not to scale and are for illustrative purposes only. All renderings and landscaping visuals, materials & facades are for indicative purposes only and subject to change. Actual areas may vary from the stated figures. All dimensions are measured to structural elements. IL Cazar reserves the right to make non-fundamental changes to the design provided herein without prior notice.



Dusk Villas 260m²



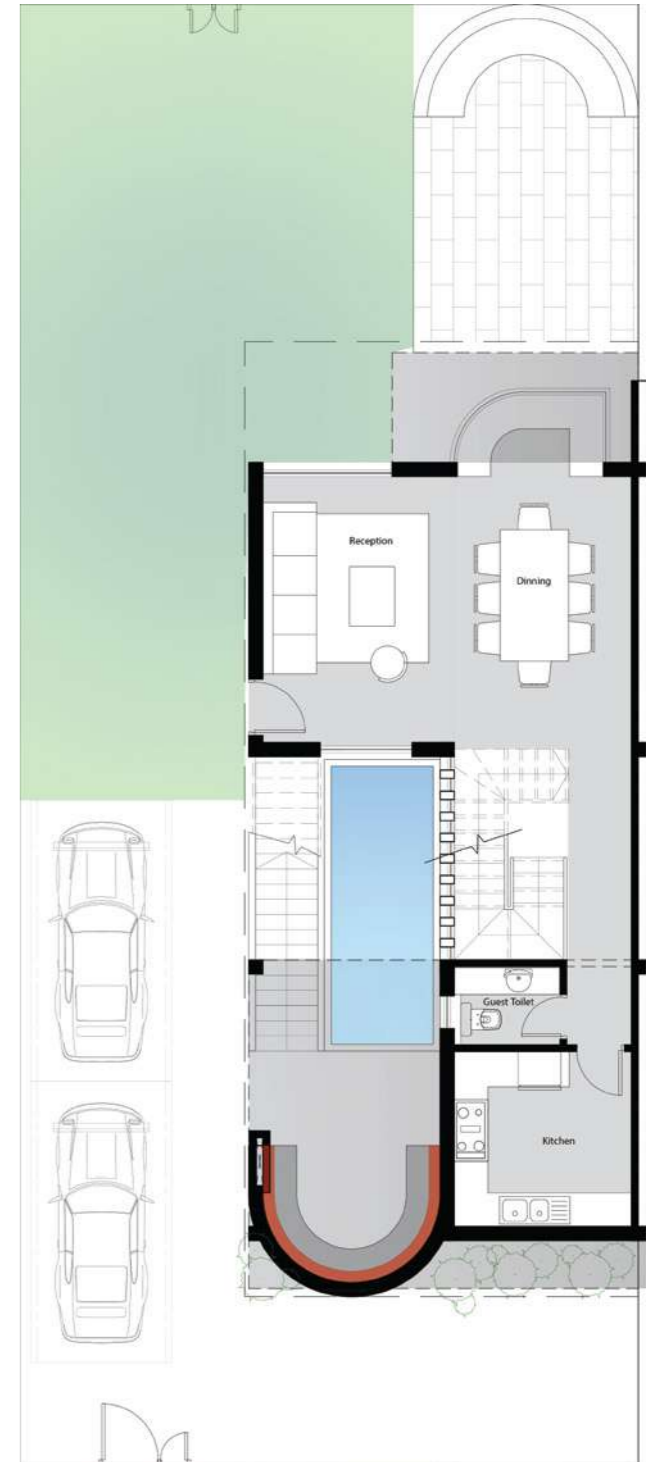


Dusk Villas

Ground Floor 108m²

Dinning / Reception	7.05 x 5.24
Guest Toilet	2.25 x 1.57
Kitchen	3.65 x 3.42
Pool	4.95 x 1.80

Diagrams are not to scale and are for illustrative purposes only. All renderings and landscaping visuals, materials & facades are for indicative purposes only and subject to change. Actual areas may vary from the stated figures. All dimensions are measured to structural elements. IL Cazar reserves the right to make non-fundamental changes to the design provided herein without prior notice.

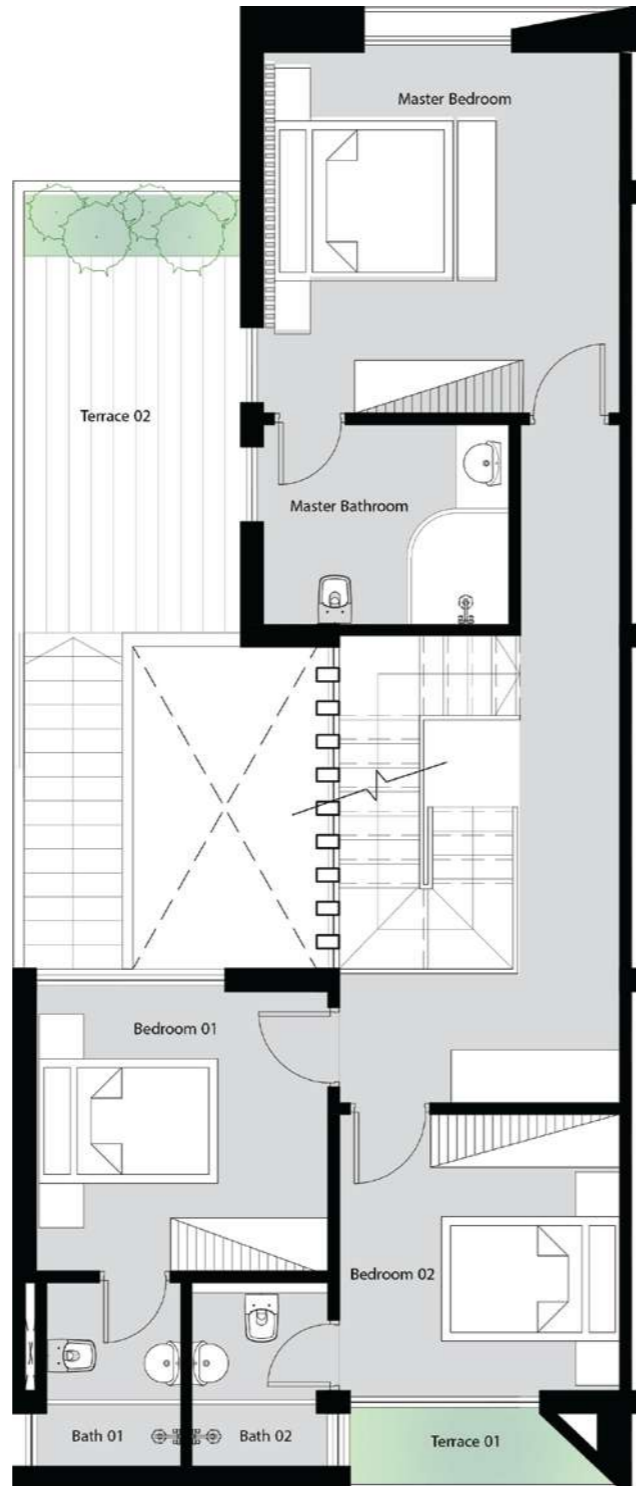


Dusk Villas

First Floor 93m²

Master Bedroom	4.66 x 4.50
Master Bathroom	3.13 x 2.43
Bedroom 01	3.59 x 3.46
Bath 01	2.38 x 1.94
Bedroom 02	3.46 x 3.42
Bath 02	2.38 x 1.71
Terrace 01	3.28 x 0.95
Terrace 02	4.96 x 2.55

Diagrams are not to scale and are for illustrative purposes only. All renderings and landscaping visuals, materials & facades are for indicative purposes only and subject to change. Actual areas may vary from the stated figures. All dimensions are measured to structural elements. IL Cazar reserves the right to make non-fundamental changes to the design provided herein without prior notice.

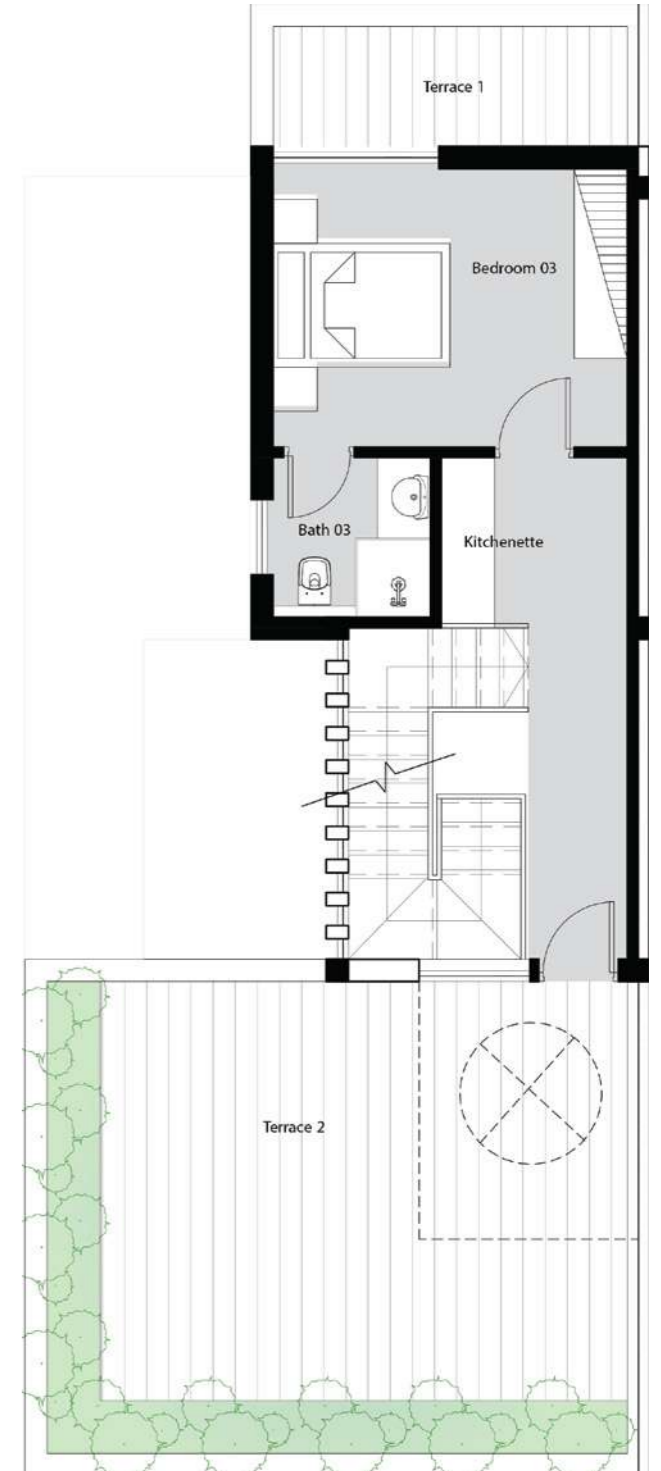


Dusk Villas

Roof Floor 59m²

Bedroom 03	4.50 x 3.47
Bath 03	2.09 x 1.99
Kitchenette	2.41 x 1.99
Terrace 01	1.36 x 4.38
Terrace 02	5.34 x 6.55

Diagrams are not to scale and are for illustrative purposes only. All renderings and landscaping visuals, materials & facades are for indicative purposes only and subject to change. Actual areas may vary from the stated figures. All dimensions are measured to structural elements. IL Cazar reserves the right to make non-fundamental changes to the design provided herein without prior notice.



Haze Chalets

- Shade Villas
- Dusk Villas
- Aura Chalets
- Haze Chalets





Haze Chalet

110m²

Ground Floor

Entrance Lobby	3.90 x 1.55
Reception / Dining	4.00 x 5.45
Kitchen	3.90 x 2.25
Master Bedroom	3.90 x 3.80
Master Bathroom	2.40 x 2.45
Bedroom 02	3.80 x 3.95
Bath 02	2.15 x 2.45
Lobby	2.20 x 2.10



Diagrams are not to scale and are for illustrative purposes only. All renderings and landscaping visuals, materials & facades are for indicative purposes only and subject to change. Actual areas may vary from the stated figures. All dimensions are measured to structural elements. IL Cazar reserves the right to make non-fundamental changes to the design provided herein without prior notice.

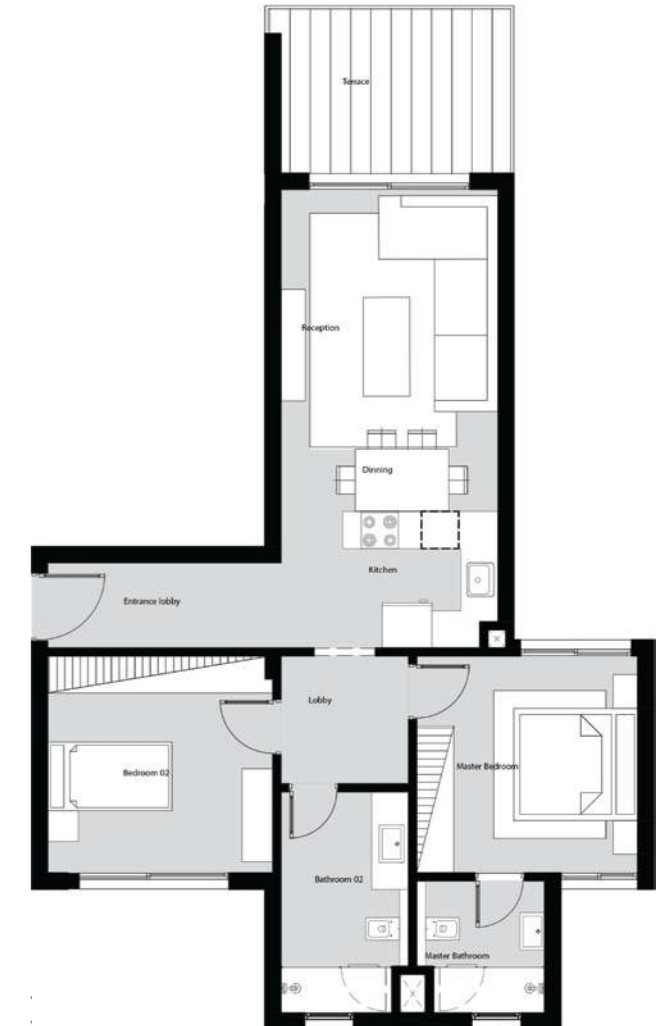


Haze Chalet

125m²

Typical Floor

Entrance Lobby	3.90 x 1.55
Reception / Dining	4.00 x 5.45
Kitchen	3.90 x 2.25
Master Bedroom	3.90 x 3.80
Master Bathroom	2.40 x 2.45
Bedroom 02	3.80 x 3.95
Bath 02	2.15 x 2.45
Lobby	2.20 x 2.10
Terrace	2.70 x 400



Diagrams are not to scale and are for illustrative purposes only. All renderings and landscaping visuals, materials & facades are for indicative purposes only and subject to change. Actual areas may vary from the stated figures. All dimensions are measured to structural elements. IL Cazar reserves the right to make non-fundamental changes to the design provided herein without prior notice.

Haze Chalet

70m²

Ground Floor

Living / Dining	5.40 x 3.90
Kitchen	3.40 x 2.35
Bedroom	3.75 x 3.90
Bath	2.30 x 2.40
Lobby	1.65 x 2.40



Diagrams are not to scale and are for illustrative purposes only. All renderings and landscaping visuals, materials & facades are for indicative purposes only and subject to change. Actual areas may vary from the stated figures. All dimensions are measured to structural elements. IL Cazar reserves the right to make non-fundamental changes to the design provided herein without prior notice.

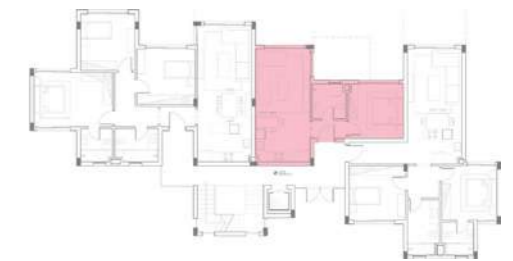
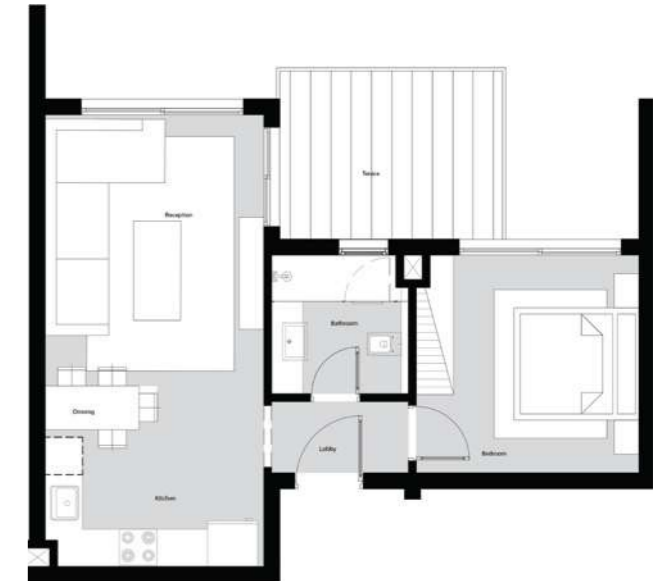


Haze Chalet

80m²

Typical Floor

Living / Dining	5.40 x 3.90
Kitchen	3.40 x 2.35
Bedroom	3.75 x 3.90
Bath	2.30 x 2.40
Lobby	1.63 x 2.40
Terrace	2.75 x 3.70



Diagrams are not to scale and are for illustrative purposes only. All renderings and landscaping visuals, materials & facades are for indicative purposes only and subject to change. Actual areas may vary from the stated figures. All dimensions are measured to structural elements. IL Cazar reserves the right to make non-fundamental changes to the design provided herein without prior notice.



Haze Chalet 145m²

Ground Floor

Reception / Dinning	3.40 x 6.60
Kitchen	2.65 x 3.75
Master Bedroom	5.40 x 4.00
Master Bathroom	2.40 x 2.45
Bedroom 02	3.90 x 3.90
Bath 02	3.15 x 2.45
Bedroom 03	4.00 x 3.95
Lobby 01	3.90 x 1.45
Lobby 02	1.45 x 3.60

Diagrams are not to scale and are for illustrative purposes only. All renderings and landscaping visuals, materials & facades are for indicative purposes only and subject to change. Actual areas may vary from the stated figures. All dimensions are measured to structural elements. IL Cazar reserves the right to make non-fundamental changes to the design provided herein without prior notice.

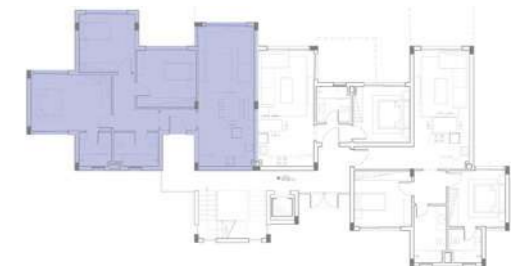
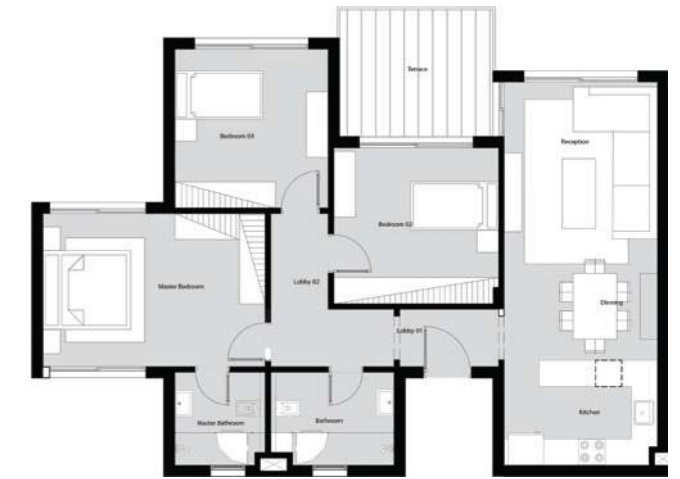


Haze Chalet 160m²

Typical Floor

Reception / Dinning	3.40 x 6.60
Kitchen	2.65 x 3.75
Master Bedroom	5.40 x 4.00
Master Bathroom	2.40 x 2.45
Bedroom 02	3.90 x 3.90
Bath 02	3.15 x 2.45
Bedroom 03	4.00 x 3.95
Lobby 01	3.90 x 1.45
Lobby 02	1.45 x 3.60
Terrace	3.60 x 2.95

Diagrams are not to scale and are for illustrative purposes only. All renderings and landscaping visuals, materials & facades are for indicative purposes only and subject to change. Actual areas may vary from the stated figures. All dimensions are measured to structural elements. IL Cazar reserves the right to make non-fundamental changes to the design provided herein without prior notice.

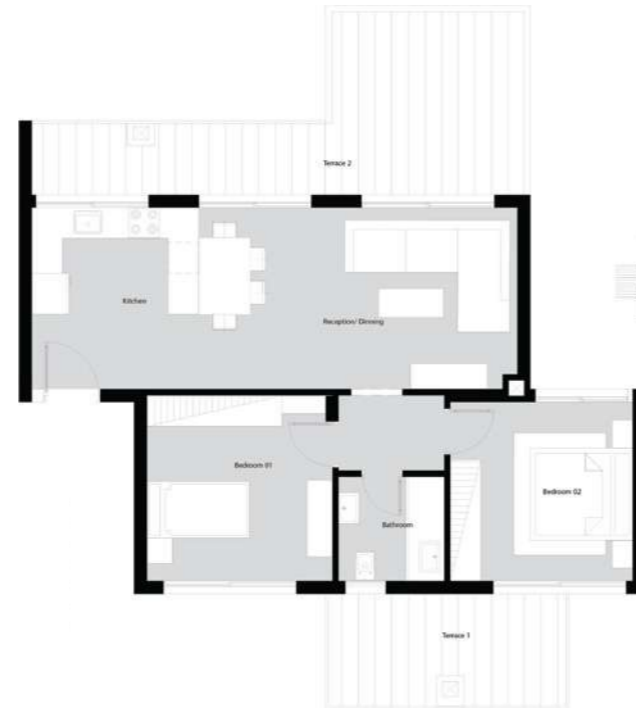


Haze Chalet 105m²

Penthouse

Reception / Dinning	9.87 x 3.85
Kitchen	3.40 x 2.10
Bedroom 01	3.80 x 3.70
Bathroom	2.20 x 2.35
Bedroom 02	3.88 x 3.88
Terrace 1	4.75 x 2.25
Terrace 2	9.60 x 3.70

Diagrams are not to scale and are for illustrative purposes only. All renderings and landscaping visuals, materials & facades are for indicative purposes only and subject to change. Actual areas may vary from the stated figures. All dimensions are measured to structural elements. IL Cazar reserves the right to make non-fundamental changes to the design provided herein without prior notice.

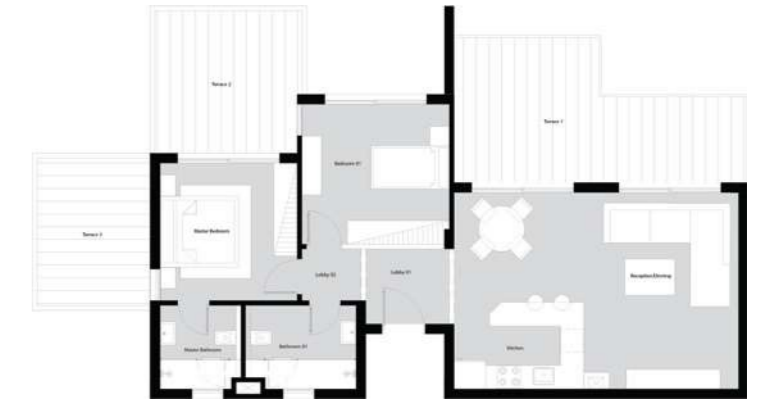


Haze Chalet 120m²

Penthouse

Reception / Dinning	7.55 x 5.50
Kitchen	3.30 x 2.20
Master Bedroom	3.81 x 3.81
Master Bathroom	2.45 x 2.40
Bedroom 01	3.88 x 3.88
Bath 01	3.40 x 2.45
Lobby 01	2.25 x 2.23
Lobby 02	1.45 x 1.70
Terrace 01	7.50 x 3.75
Terrace 02	3.75 x 3.75
Terrace 03	2.88 x 3.75

Diagrams are not to scale and are for illustrative purposes only. All renderings and landscaping visuals, materials & facades are for indicative purposes only and subject to change. Actual areas may vary from the stated figures. All dimensions are measured to structural elements. IL Cazar reserves the right to make non-fundamental changes to the design provided herein without prior notice.



Aura Chalets

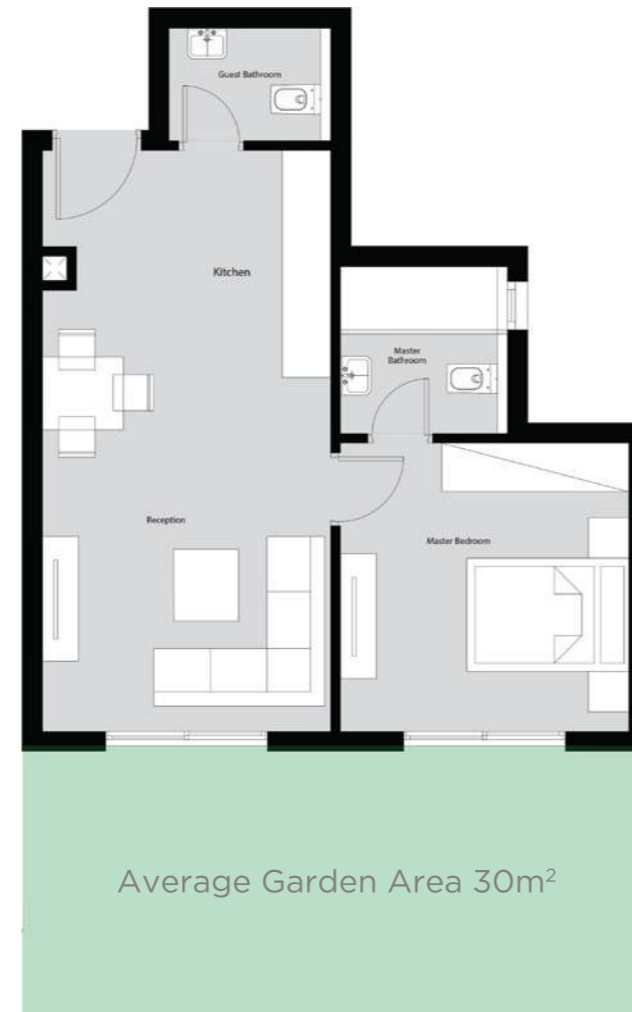




Aura Chalet 70m² (Attached)

Ground Floor

Reception / Dinning	7.50 x 3.88
Guest Bathroom	1.57 x 2.31
Master Bedroom	3.88 x 4.06
Master Bathroom	2.31 x 2.38



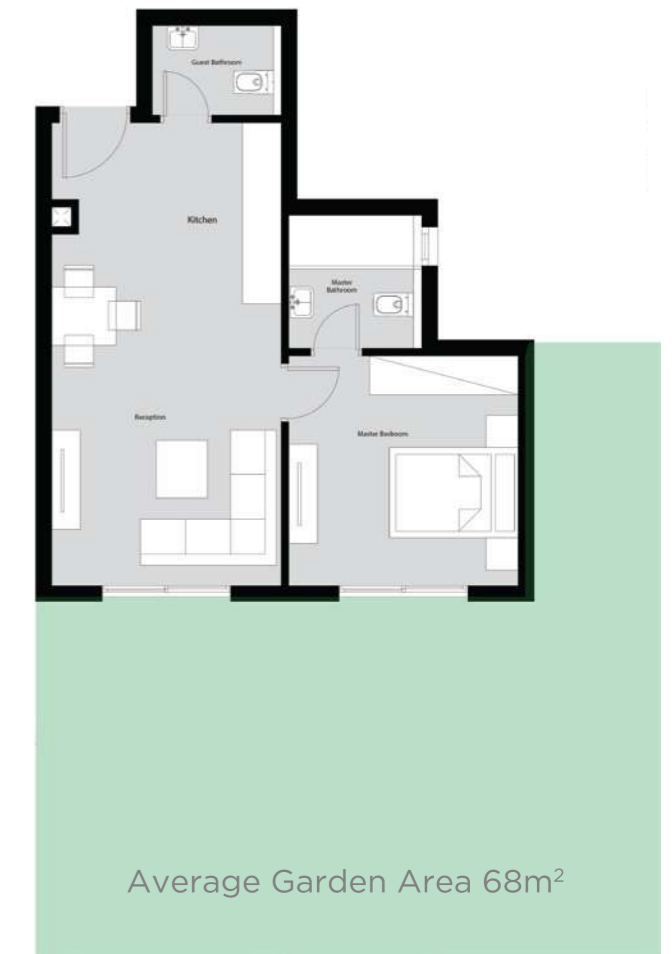
Diagrams are not to scale and are for illustrative purposes only. All renderings and landscaping visuals, materials & facades are for indicative purposes only and subject to change. Actual areas may vary from the stated figures. All dimensions are measured to structural elements. IL Cazar reserves the right to make non-fundamental changes to the design provided herein without prior notice.



Aura Chalet 70m² (Single)

Ground Floor

Reception / Dinning	7.50 x 3.88
Guest Bathroom	1.57 x 2.31
Master Bedroom	3.88 x 4.06
Master Bathroom	2.31 x 2.38



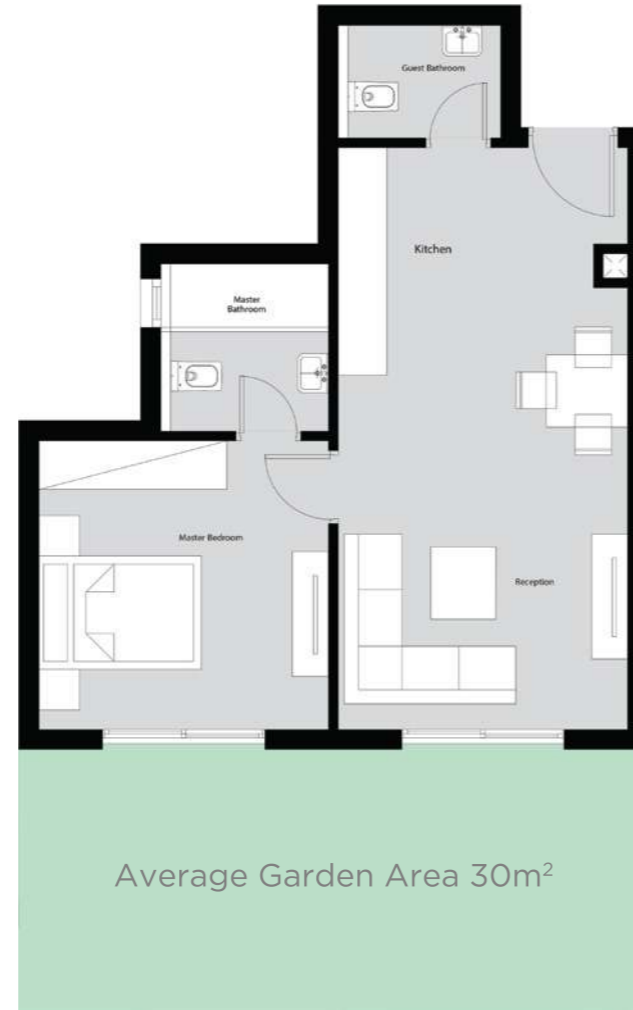
Diagrams are not to scale and are for illustrative purposes only. All renderings and landscaping visuals, materials & facades are for indicative purposes only and subject to change. Actual areas may vary from the stated figures. All dimensions are measured to structural elements. IL Cazar reserves the right to make non-fundamental changes to the design provided herein without prior notice.



Aura Chalet 70m² (Attached)

Ground Floor

Reception / Dinning	7.50 x 3.88
Guest Bathroom	1.57 x 2.31
Master Bedroom	3.88 x 4.06
Master Bathroom	2.31 x 2.38



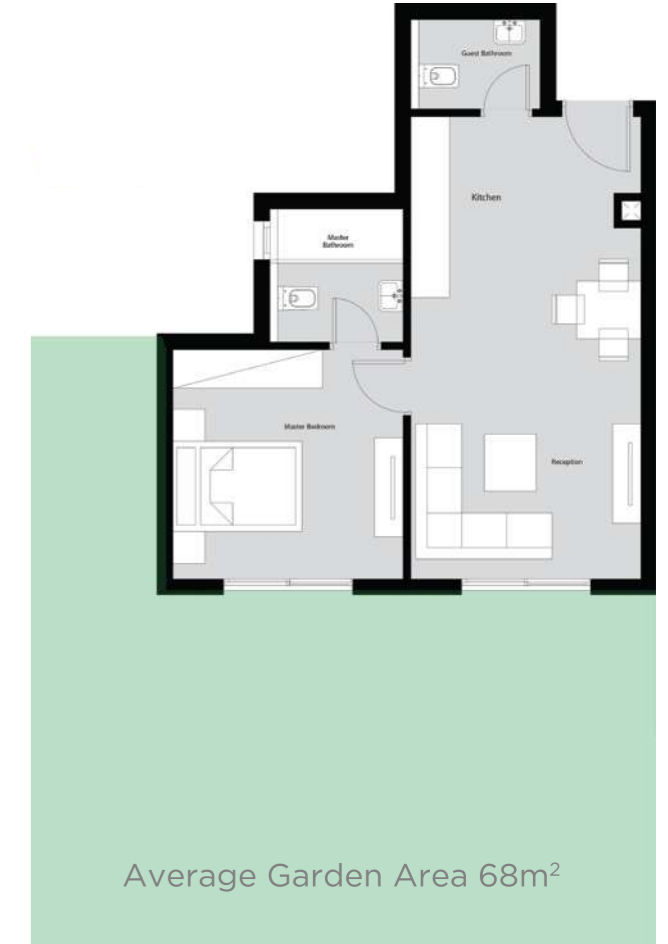
Diagrams are not to scale and are for illustrative purposes only. All renderings and landscaping visuals, materials & facades are for indicative purposes only and subject to change. Actual areas may vary from the stated figures. All dimensions are measured to structural elements. IL Cazar reserves the right to make non-fundamental changes to the design provided herein without prior notice.



Aura Chalet 70m² (Single)

Ground Floor

Reception / Dinning	7.50 x 3.88
Guest Bathroom	1.57 x 2.31
Master Bedroom	3.88 x 4.06
Master Bathroom	2.31 x 2.38



Diagrams are not to scale and are for illustrative purposes only. All renderings and landscaping visuals, materials & facades are for indicative purposes only and subject to change. Actual areas may vary from the stated figures. All dimensions are measured to structural elements. IL Cazar reserves the right to make non-fundamental changes to the design provided herein without prior notice.

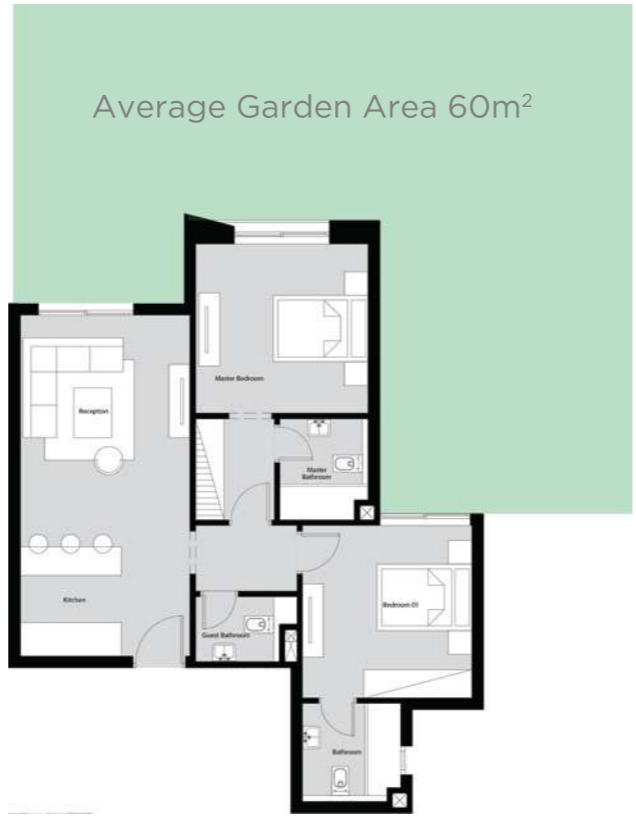


Aura Chalet 110m² (Attached)

Ground Floor

Reception / Dinning	7.70 x 3.75
Guest Bathroom	1.56 x 2.25
Master Bedroom	3.83 x 3.95
Master Bathroom	2.17 x 2.25
Bedroom 01	4.13 x 3.88
Bathroom	2.38 x 2.26

Diagrams are not to scale and are for illustrative purposes only. All renderings and landscaping visuals, materials & facades are for indicative purposes only and subject to change. Actual areas may vary from the stated figures. All dimensions are measured to structural elements. IL Cazar reserves the right to make non-fundamental changes to the design provided herein without prior notice.

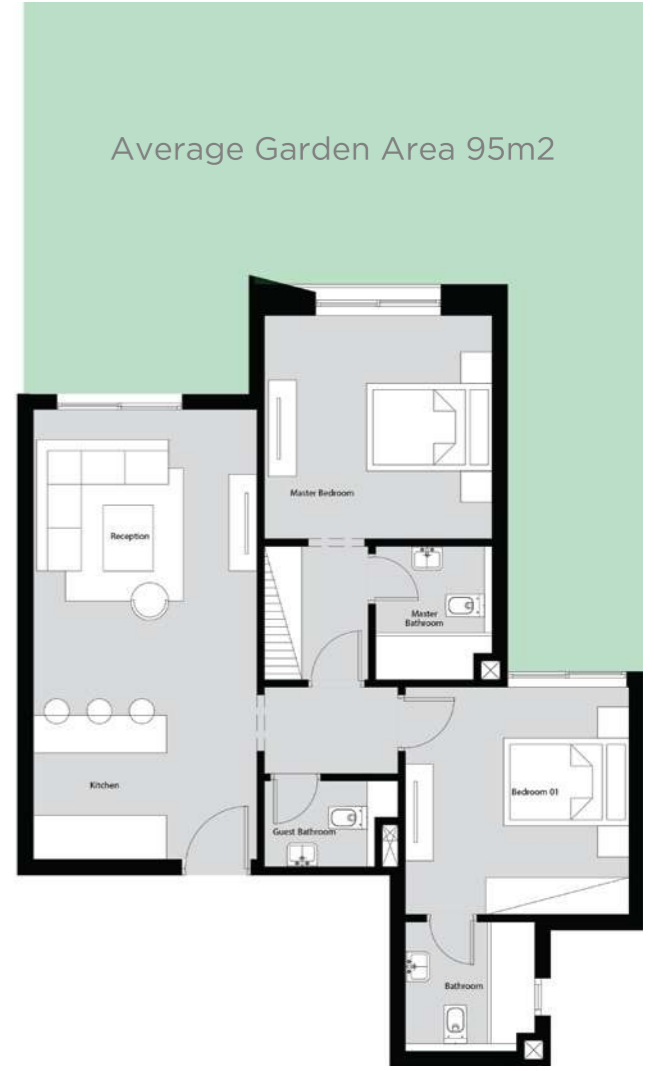


Aura Chalet 110m² (Single)

Ground Floor

Reception / Dinning	7.70 x 3.75
Guest Bathroom	1.56 x 2.25
Master Bedroom	3.83 x 3.95
Master Bathroom	2.17 x 2.25
Bedroom 01	4.13 x 3.88
Bathroom	2.38 x 2.26

Diagrams are not to scale and are for illustrative purposes only. All renderings and landscaping visuals, materials & facades are for indicative purposes only and subject to change. Actual areas may vary from the stated figures. All dimensions are measured to structural elements. IL Cazar reserves the right to make non-fundamental changes to the design provided herein without prior notice.



Aura Chalet 110m² (Attached)

Ground Floor

Reception / Dinning	7.70 x 3.75
Guest Bathroom	1.56 x 2.25
Master Bedroom	3.83 x 3.95
Master Bathroom	2.17 x 2.25
Bedroom 01	4.13 x 3.88
Bathroom	2.38 x 2.26

Diagrams are not to scale and are for illustrative purposes only. All renderings and landscaping visuals, materials & facades are for indicative purposes only and subject to change. Actual areas may vary from the stated figures. All dimensions are measured to structural elements. IL Cazar reserves the right to make non-fundamental changes to the design provided herein without prior notice.

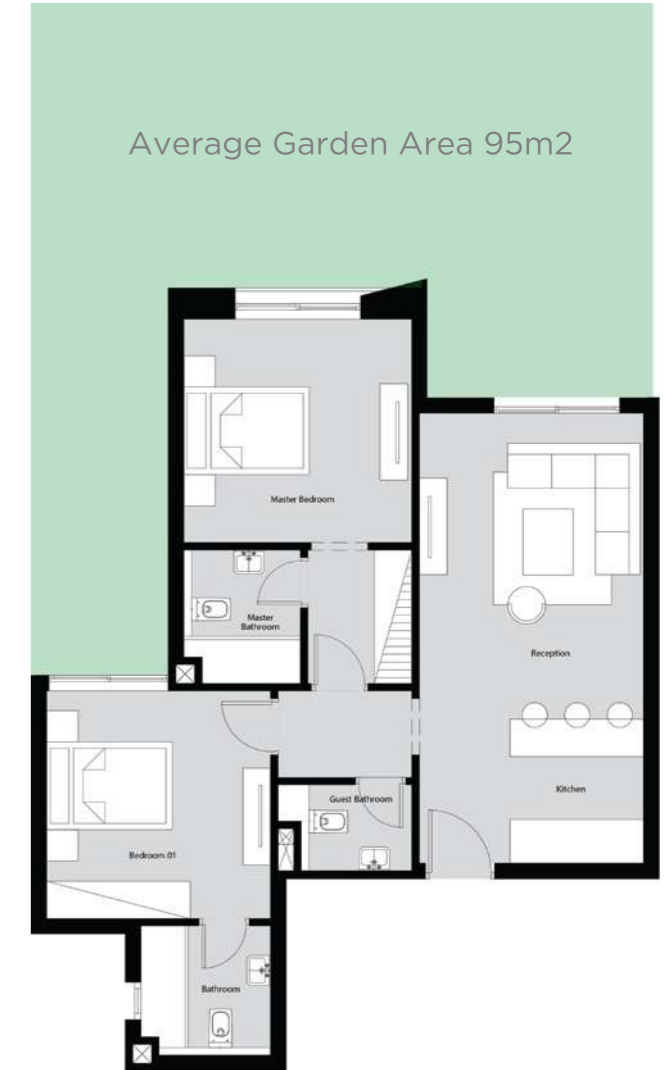


Aura Chalet 110m² (Single)

Ground Floor

Reception / Dinning	7.70 x 3.75
Guest Bathroom	1.56 x 2.25
Master Bedroom	3.83 x 3.95
Master Bathroom	2.17 x 2.25
Bedroom 01	4.13 x 3.88
Bathroom	2.38 x 2.26

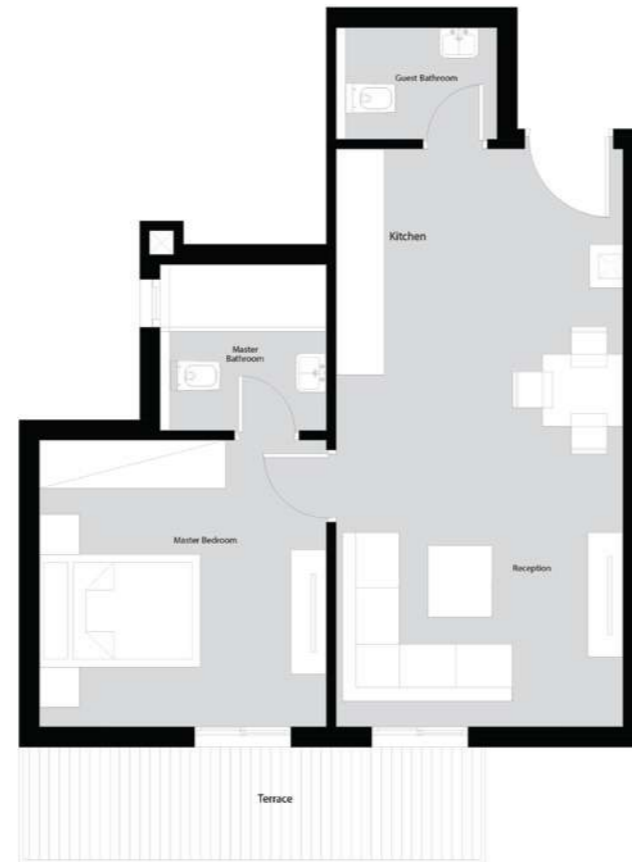
Diagrams are not to scale and are for illustrative purposes only. All renderings and landscaping visuals, materials & facades are for indicative purposes only and subject to change. Actual areas may vary from the stated figures. All dimensions are measured to structural elements. IL Cazar reserves the right to make non-fundamental changes to the design provided herein without prior notice.



Aura Chalet 80m²

Typical Floor

Reception / Dinning	7.50 x 3.88
Guest Bathroom	1.57 x 2.31
Master Bedroom	3.88 x 4.06
Master Bathroom	2.31 x 2.38
Terrace	1.45 x 5.50



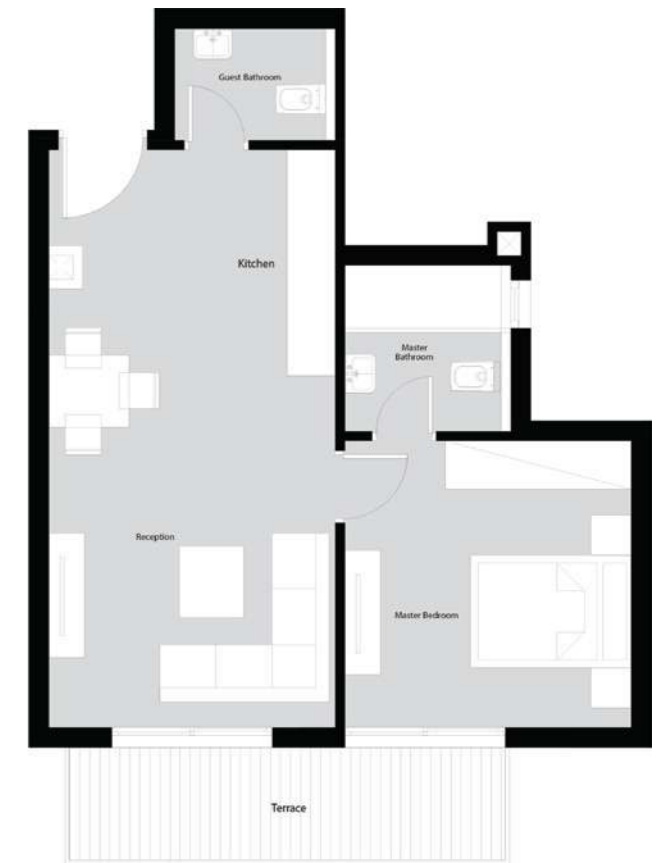
Diagrams are not to scale and are for illustrative purposes only. All renderings and landscaping visuals, materials & facades are for indicative purposes only and subject to change. Actual areas may vary from the stated figures. All dimensions are measured to structural elements. IL Cazar reserves the right to make non-fundamental changes to the design provided herein without prior notice.



Aura Chalet 80m²

Typical Floor

Reception / Dinning	7.50 x 3.88
Guest Bathroom	1.57 x 2.31
Master Bedroom	3.88 x 4.06
Master Bathroom	2.31 x 2.38
Terrace	1.45 x 5.45



Diagrams are not to scale and are for illustrative purposes only. All renderings and landscaping visuals, materials & facades are for indicative purposes only and subject to change. Actual areas may vary from the stated figures. All dimensions are measured to structural elements. IL Cazar reserves the right to make non-fundamental changes to the design provided herein without prior notice.

Aura Chalet 120m²

Typical Floor

Reception / Dinning	7.70 x 3.75
Guest Bathroom	1.56 x 2.25
Master Bedroom	3.83 x 3.95
Master Bathroom	2.17 x 2.25
Bedroom 01	4.13 x 3.88
Bathroom	2.38 x 2.26
Terrace 1	1.40 x 3.50
Terrace 2	1.95 x 2.15

Diagrams are not to scale and are for illustrative purposes only. All renderings and landscaping visuals, materials & facades are for indicative purposes only and subject to change. Actual areas may vary from the stated figures. All dimensions are measured to structural elements. IL Cazar reserves the right to make non-fundamental changes to the design provided herein without prior notice.



Aura Chalet 120m²

Typical Floor

Reception / Dinning	7.70 x 3.75
Guest Bathroom	1.56 x 2.25
Master Bedroom	3.83 x 3.95
Master Bathroom	2.17 x 2.25
Bedroom 01	4.13 x 3.88
Bathroom	2.38 x 2.26
Terrace 1	1.40 x 3.50
Terrace 2	1.95 x 2.15

Diagrams are not to scale and are for illustrative purposes only. All renderings and landscaping visuals, materials & facades are for indicative purposes only and subject to change. Actual areas may vary from the stated figures. All dimensions are measured to structural elements. IL Cazar reserves the right to make non-fundamental changes to the design provided herein without prior notice.



Aura Chalet 140m²

Penthouse

Reception / Dining	7.70 x 4.56
Kitchen	3.88 x 3.95
Guest Toilet	2.50 x 1.40
Bedroom	3.87 x 3.88
Bathroom	2.51 x 2.31
Master Bedroom	3.87 x 3.88
Master Bathroom	2.33 x 2.38
Dressing	2.18 x 2.38
Terrace 1	7.50 x 4.40
Terrace 2	1.40 x 3.90

Diagrams are not to scale and are for illustrative purposes only. All renderings and landscaping visuals, materials & facades are for indicative purposes only and subject to change. Actual areas may vary from the stated figures. All dimensions are measured to structural elements. IL Cazar reserves the right to make non-fundamental changes to the design provided herein without prior notice.



Aura Chalet 140m²

Penthouse

Reception / Dining	7.70 x 4.56
Kitchen	3.88 x 3.95
Guest Toilet	2.50 x 1.40
Bedroom	3.87 x 3.88
Bathroom	2.51 x 2.31
Master Bedroom	3.87 x 3.88
Master Bathroom	2.33 x 2.38
Dressing	2.18 x 2.38
Terrace 1	7.50 x 4.40
Terrace 2	1.45 x 3.18

Diagrams are not to scale and are for illustrative purposes only. All renderings and landscaping visuals, materials & facades are for indicative purposes only and subject to change. Actual areas may vary from the stated figures. All dimensions are measured to structural elements. IL Cazar reserves the right to make non-fundamental changes to the design provided herein without prior notice.



Partners in Success

Raef Fahmi is an Egyptian architect and interior designer that has been working for many years in the field and has created a name for himself that is known by everyone. Fahmi has worked on some of the most prominent and iconic projects in Egypt.





IL [♠]CAZAR